

# CHARLES L. GIDEON ELEMENTARY SCHOOL

Weekly Construction Progress Report  
Week 6/24/19-6/28/19



**Balfour Beatty**

# 6/17/19-6/21/19 Activities

- Began installation of kitchen equipment
- Finished grouting all wall tile in gang bathrooms in addition building
- Applied first coats of paint to Lobby wall
- Installed elevator equipment
- Poured sidewalks at front entrance
- Installed binder at bus loop, and service drive
- Installed storefronts at main entrance vestibule
- Began installation of VCT and Carpet at upper level addition
- Installed permanent lighting in kitchen
- Began painting classroom and office walls in upper level addition
- Landscaping began delivery of all trees on site



Exterior Skin – Metal Panels & Storefronts

# 6/17/19-6/21/19 Activities



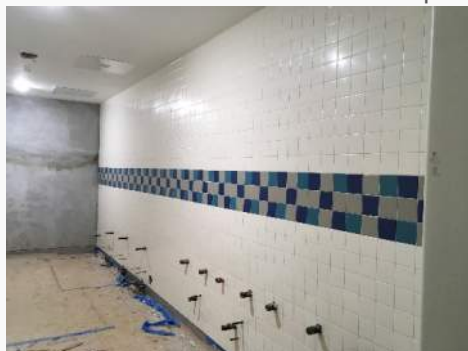
Binder and Sidewalk at Bus-Loop



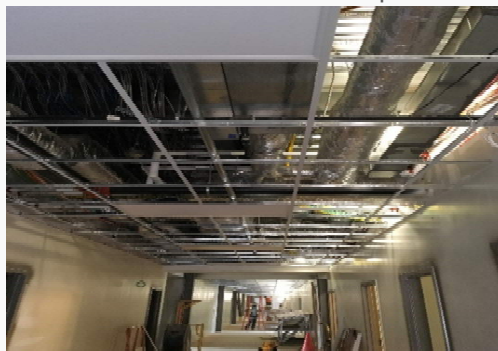
Sidewalk at Parent Drop-off



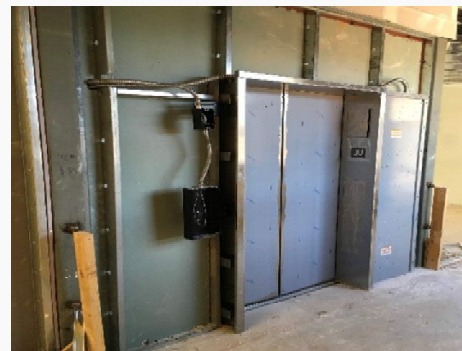
Storefront at Front Entrance Vestibule



Wall Tile Finished with Grout in  
Bathroom

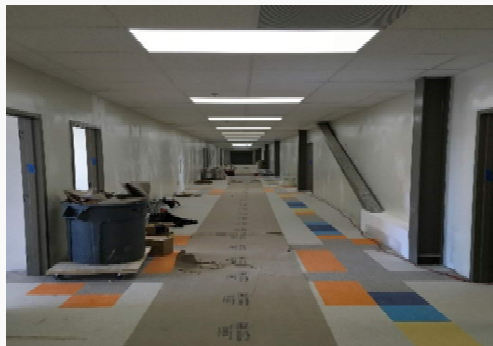


Lower Level Addition Ceiling Grid



Elevator in Lower Level Addition

# 6/17/19-6/21/19 Activities



VCT in Main Corridor of Upper Level Addition



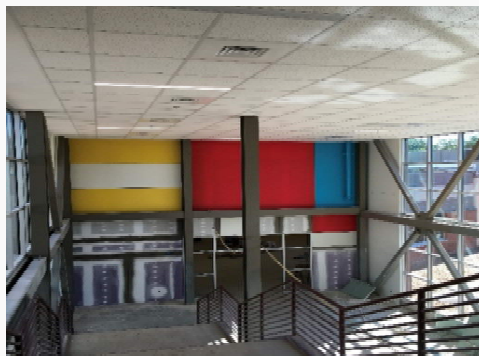
VCT in Upper Level Classroom



Binder at Service Entrance



Kitchen Equipment



Begin Painting of Lobby Colors



Permanent Lighting at Kitchen



# 6/24/19-6/28/19 Activities

- Finished Installation of flooring at upper level addition
- Began installation of plumbing fixtures at upper level addition
- Began installation of landscaping materials at parking lot and courtyard
- Finished sidewalk at front entrance
- Began installation of door hardware at upper level addition
- Applied paint to upper level classrooms
- Installed glass at lobby storefronts
- Began installation of VCT and carpet in lower level addition
- Installed exterior doors at main entrance and service drive
- Graded and removed excess fill at the west elevation
- Applied final coat of wax to 90's renovation classrooms



Exterior Skin – Metal Panels & Storefronts

# 6/24/19-6/28/19 Activities



Bathroom Fixtures on Lower Level Add.



Classroom at Upper Level with Millwork



Storefront and Glass at Ent. Vestibule



Patio at Courtyard



Lower Level Addition Ceiling Tile



Corkboards at Renovation

# 6/24/19-6/28/19 Activities



Carpet in Media Center



Signage at Welch Entrance



Whiteboards at Renovation Classroom



Sidewalk from Addition to Gym



Courtyard with Trees



Millwork and Door at Teacher Lounge

# 7/1/19-7/5/19 Activities



- Apply paint to first floor classrooms at addition building
- Finish ceiling tile and grid in lower level addition building
- Finish installation of VCT at cafeteria
- Begin installation of plumbing fixtures in lower level addition bathrooms
- Finish installation of millwork in upper level addition classrooms
- Install top coat of asphalt
- Finish installation of trees
- Finish upper level VCT, Carpet, and Rubber Base at addition
- Finish upper level door hardware at addition classroom and office

## Project Schedule

- Project schedule impacted by delayed LDP and Building Permit procurement
- Project substantial completion: 8/1/19 per 2/12/19 schedule update
  - Execution of OCO 1 and OCO 2 adjusted substantial completion date to 8/1/19

## Project Financials

- Current contract value: \$14,400,000.